

# SJEC

## ESCALATOR & PASSENGER CONVEYOR



# SJEC

SJEC CORPORATION

ADD: 718 Fengting Avenue, 215122, Suzhou, P.R. China

TEL: 0086-512-62746790 89180629

FAX: 0086-512-89180624

WEB: [www.sjec.com.cn](http://www.sjec.com.cn)



## SJEC CORPORATION





# ONE OF THE BIGGEST ESCALATOR & PASSENGER CONVEYOR MANUFACTURER



## SJEC Corporation briefs

### Abstract

SJEC Corporation (SJEC) is located in SIP, Suzhou, China. Since it established in 1992, it has been focusing on R&D, manufacturing, sales, maintenance, installation and modernization of products with high technology like elevator, escalator and passenger conveyer.

### Profile

SJEC covers a land area of 56000m2 and manufacturing area of 31500m2. It is equipped with advanced manufacturing facilities including 6 modern assembling lines, turret punching machine, laser cutting machine, machining center, CNC shearing M/C, and welding robot etc. In order to guarantee that R&D is more efficient, more reasonable and safer, the technical team has been formed its strong R&D facility, such as Solid Edge 3D design system including senior indeed imitation, finity unit analysis etc.

At present, SJEC always become one of internationalization enterprise which has advanced elevator & escalator technology and owner with intellectual property rights

### QC

SJEC is the unique national company acquired certificate of ISO9001, ISO14001, OHSAS18000 and SA8000 audited by DNV. And all kinds of products had accorded with the directive 98/37/EC, 95/16/EC and code of EN115/EN81, then acquired with CE & EMC certificate issued by TUV, and DIN18800-7 steel structure welding certificate issued by Germany SLV Duisburg.

### Sales

With more than 17 years effort, Its product have been saling over more than 60 countries and regions worldwide. SJEC have a variety of products, such as high speed elevator, observation elevator, MRL elevator, mini machine-room elevator, freight elevator, commercial escalators, public service escalators and passenger conveyors. SJEC has gained a reputation both within china and oversea for its leading technology and continual innovation idea.



Overview of company



Pavilion of company





# Manufacturing Facilities

Believed that best quality comes from the best equipment. SJEC has imported the world's first classic NC facilities, At present, SJEC has been updated its 6 sheet metal lines . there are 4KW laser cutting machine from MITSUBISHI, Turret punching machine from WIEDMANN, CNC Bending and shearing machine from KOMATSU, Processing lines from AMADA, Processing Center from CINCINNATI, Welding robot from YASKAWA and etc. All these can well guarantee our manufacturing quality.



Workshop



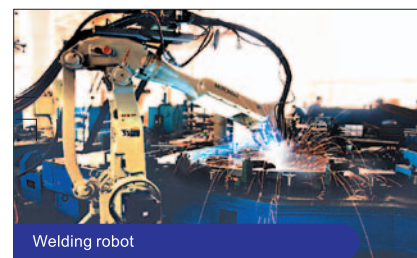
Turret punching and shearing machine



Laser cutting machine



SALVAGNINI flexible product line



Welding robot



Die-casting machine

# FES Escalator

Silence and comfort. The new generation has inherited the traditional safety, reliability, high efficiency style and combined with updated market trends as well as tailored solutions. It is widely used for shopping malls, Hotels, office blocks and etc.



Avnat mall, Israel

Type	FES
Inclination	30° /35°
Step width(mm)	600/800/1000
Horizontal step run (mm)	800/1200
Speed (m/s)	0.5
Power supply	AC 3 phase.5 wire50Hz/60Hz
Installation position	Indoor/Outdoor
Rise(m)	2~7.5

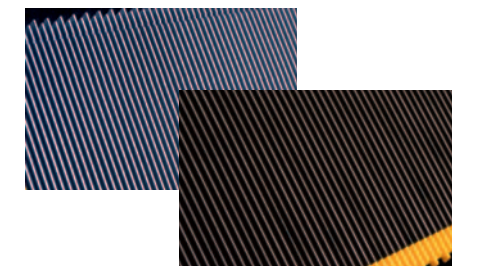
Type	Standard	Optional
Balustrade design	Vertical safety glass (10mm safety tempered glass)	
Balustrade profile	Hairline ST/ST	
Handrail	Black	Other colors
Deckings	Hairline ST/ST	
Skirting panel	Hairline ST/ST	
Step	Aluminum alloy, painted with silver gray.	Black color or ST/ST
Landing plate	Etched ST/ST with anti slip pattern	Aluminum
Operation panel	Red emergency stop button and up/down key switch	Traffic light



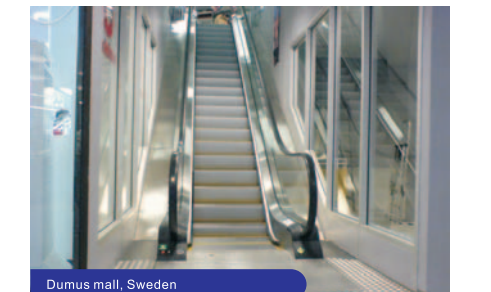
Sorya Shopping Center, Cambodia



Brisbane Royal Hospital, Australia



Science&Technology Hall, Beijing China



Dumus mall, Sweden



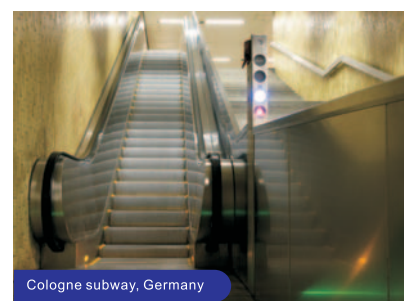
# FEH-01/FEH-10/FEH-20 Escalator

Weatherproof and unique balustrade design, conform to special customer specifications. It is suit for airport, subway and overpass etc.



Type	FEH-01	FEH-10	FEH-20
Inclination	30° / 35°	30° / 35°	30°
Step width(mm)	600/800/1000	600/800/1000	600/800/1000
Horizontal step run (mm)	800/1200/1600	800/1200/1600	1200/1600
Speed (m/s)	0.5/0.65		
Power supply	AC 3 phase.5 wire50Hz/60Hz		
Installation position	Indoor/Outdoor		
Rise(m)	2~7.5	2~12.5	3~25

Type	Standard	Optional
Balustrade design	Vertical safety glass(10mm safety tempered glass)	Vertical/Inclined ST/ST(2mm)
Balustrade profile	Hairline ST/ST	
Handrail	Black	Other colors
Deckings	Hairline ST/ST	
Skirting panel	Hairline ST/ST	
Step	Die- cast aluminum, painted with silver gray.	Black color/Yellow resin demarcetion
Landing plate	Etched ST/ST with anti slip pattern	Aluminum with anti-slip grooves
Operation panel	Red emergency stop button and up-down key switch	Traffic light

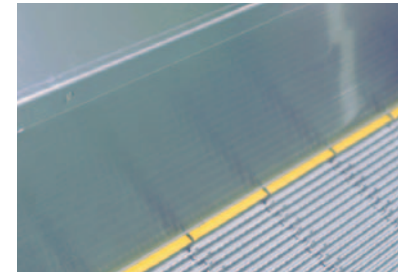
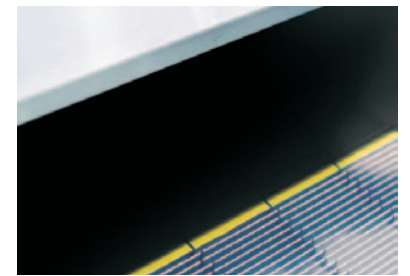


# Passenger Conveyor

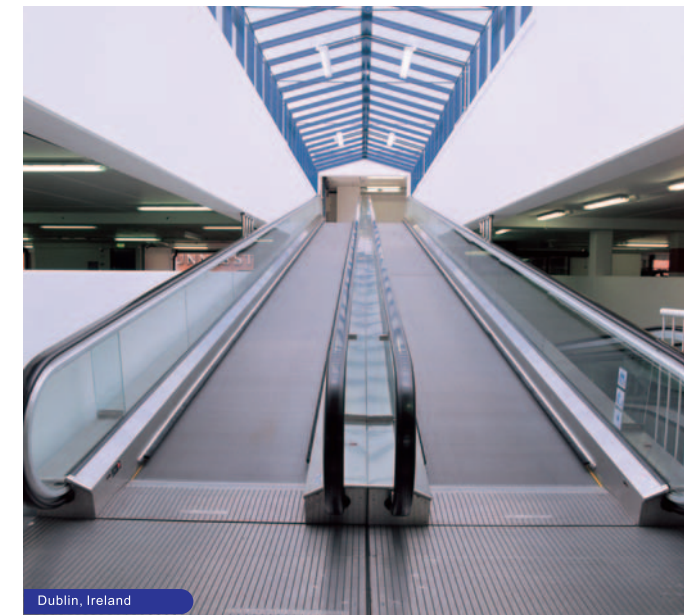
SJEC CORPORATION  
www.sjec.com.cn

Is reliable, high efficiency, easy for maintenance , which is suit for hypermarket and airport .

Specs	Moving walks		
Type	FET	FEF	FEW
Inclination	10° 11° 12°	10° 11° 12°	0° – 6°
Pallet width (mm)	800/1000	800/1000	1000/1200/1400
Horizontal pallet run (mm)	400(upper landing)	400/800	N/A
Speed (m/s)	0.5		
Power supply	AC 3 phase.5 wire50Hz/60Hz		
Installation position	Indoor/Outdoor		
Rise/Length(m)	H:2~8	H:2~8	L:120



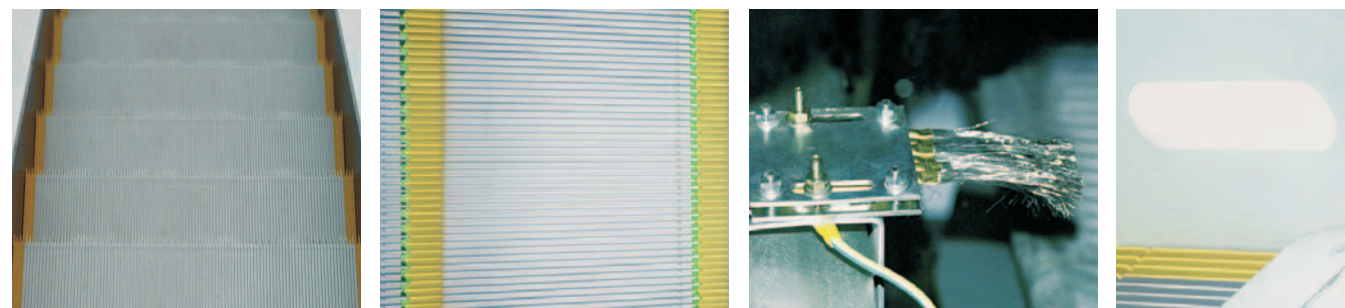
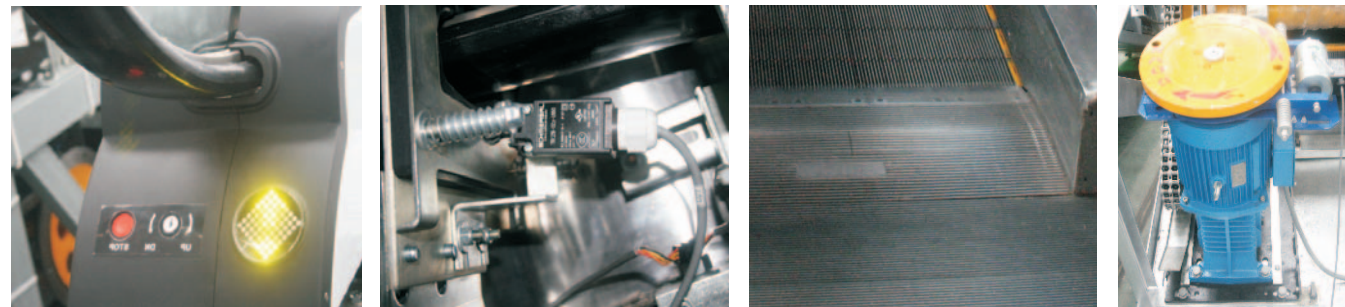
Type	Standard	Optional
Balustrade design	Vertical safety galsss(10mm safety tempered glass)	Incline ST/ST (2mm) for FEW
Balustrade profile	Hairline ST/ST	
Handrail	Black	Other colors
Deckings	Hairline ST/ST	Hairline ST/ST
Skirting panel	Hairline ST/ST	Teflon coating
Pallet	Die cast aluminum, painted with silver gray.	Black color
Landing plate	Etched stainless steel with anti slip pattern	Aluminum with anti-slip grooves
Operation panel	Red emergency stop button and up-down key switch	Traffic light





# Standard Features

Standard	FES	FEH-10/FEH-20	FET/FEF/FEW
Skirting Contacts	●	●	
Handrail Entry Contacts	●	●	●
Step/Pallet chains contacts	●	●	●
Step/Pallet sag contacts	●	●	●
Phase Monitor	●	●	●
Motor Overload	●	●	●
Motor Overheat	●	●	●
Comb Contacts	●	●	●
Step Gap Illumination	●	●	
Maintenance Interlock Protection	●	●	●
Alarm buzzer	●	●	●
Speed Monitor with Electrical Reverse Detection	●	●	●
Step/Pallet anti-static brush	●	●	●
Emergency stop buttons	●	●	●
Step/Pallet reversing fences	●	●	●
Handrail anti-static roller	●	●	●
Service brake release contact	●	●	●
Safety Brake on Main shaft		●	
Soft Stop	●	●	●
Comb Light			●

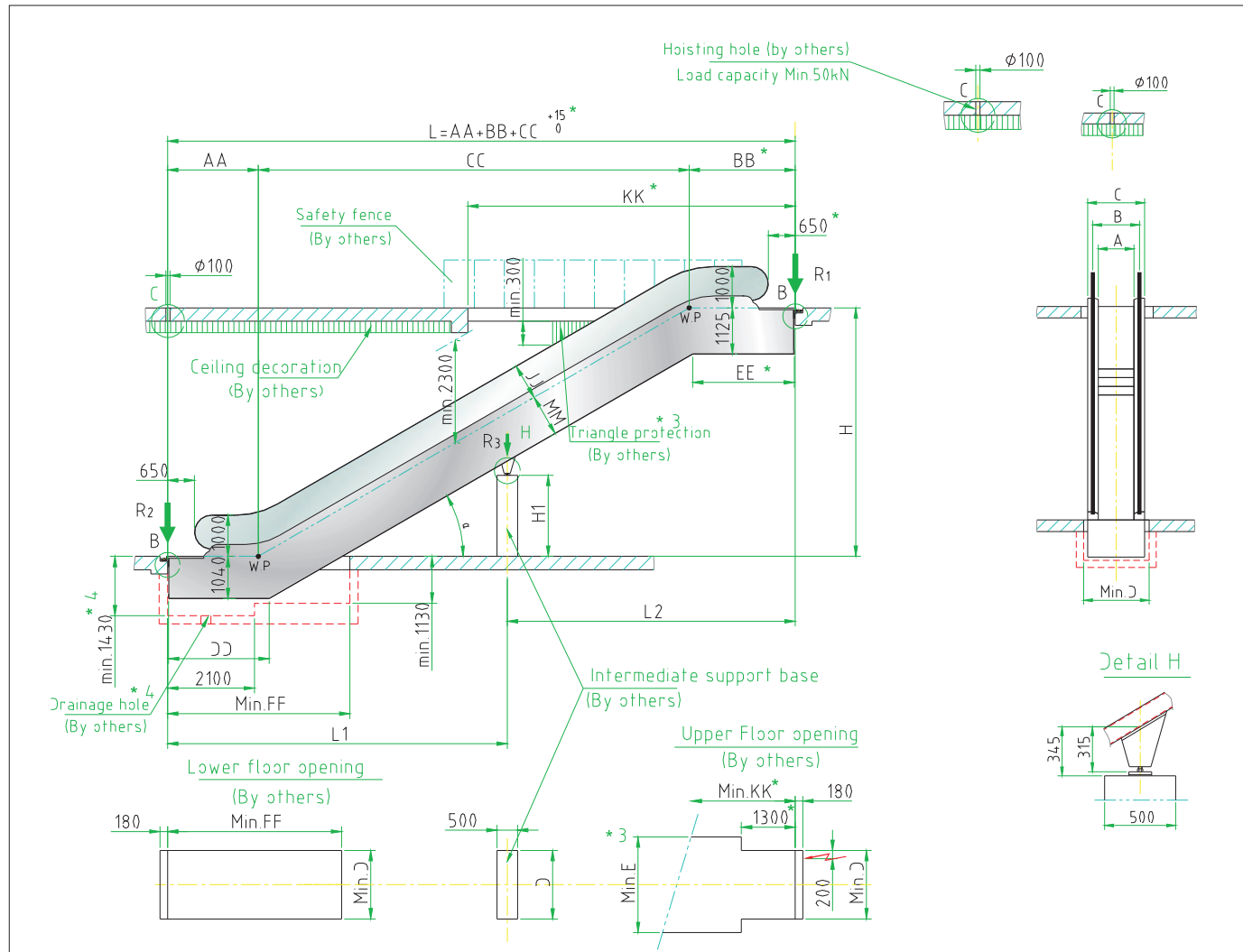


# Optional Features

Optional	FES	FEH-10/FEH-20	FET/FEF/FEW
Handrail Colour	●	●	●
Step/Pallet Colour	●	●	
Surge Protection	●	●	●
Step Safety Demarcation	●	●	
Fire Interface	●	●	●
Dry Contact for Remote Monitoring System	●	●	●
Automatic Lubrication System	●	●	●
Comb Heating System	●	●	●
Truss Heating System	●	●	●
Fault Diagnostic System	●	●	●
Step/Pallet Missing Monitor	●	●	●
Brake Distance Monitor	●	●	●
Handrail Speed Monitor	●	●	●
Skirting Brush	●	●	●
VVVF Control	●	●	●
Auto-Start	●	●	●
Outside Cladding	●	●	●
Safety Brake on Main Shaft	●		●
Traffic Light	●	●	●
Comb Light	●	●	
Skirting Lighting (LED Dot Light)	●	●	●
Landing Plate Contact	●	●	●
Handrail Broken Contact	●	●	●
Step Upthrust Contact	●	●	●
Float Contact	●	●	●
Drive-china Contact	●	●	●
Cable Connector for intersection	●	●	●



# FES Layout for Commercial Escalator



Type	a	AA	BB	CC	DD	EE	FF	JJ	KK	MM
FES-302	30°	2195	2564	H×1.732	2230	2650	4200	870	7900	960
FES-352	35°	2229	2648	H×1.428	2385	2602	4000	850	7100	980
FES-303	30°	2595	2964	H×1.732	2630	3050	4600	870	8300	960
FES-353	35°	2629	3048	H×1.428	2785	3002	4400	850	7500	980

For slim-vertical balustrade

A	600	800	1000
B	837	1037	1237
C	1145	1345	1545
D	1200	1400	1600
E	1850	2050	2250

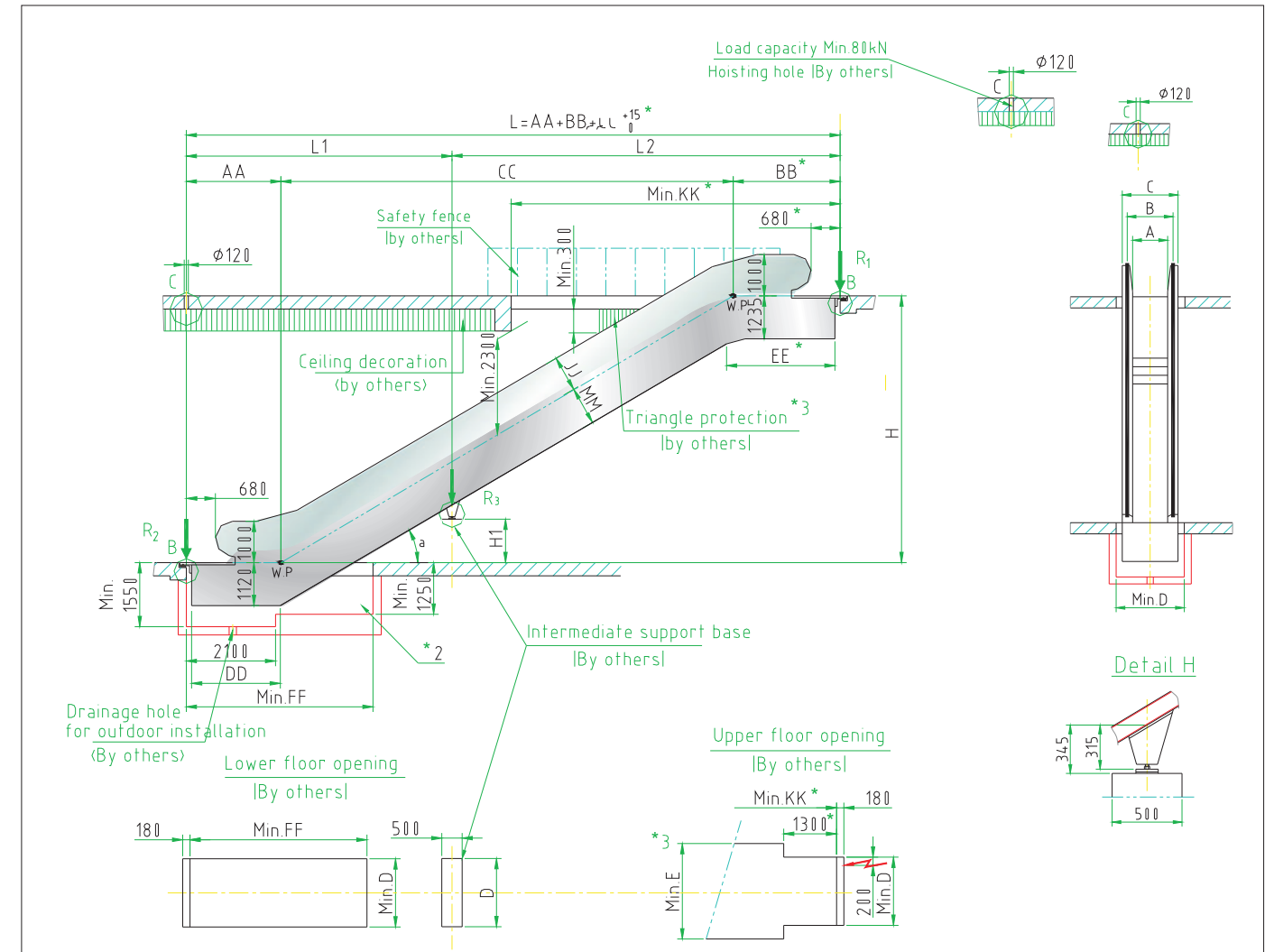
A	Reaction Force (KN)	
	W/o intermediate support	With one intermediate support
600	$R1=3.35 \times L + 15.5$	$R1=3.35 \times L2 + 11.5$
	$R2=3.35 \times L + 10$	$R2=3.35 \times L1 + 4.5$
		$R3=3.35 \times L + 3.5$
800	$R1=3.7 \times L + 10$	$R1=3.7 \times L2 + 12$
	$R2=3.7 \times L + 11$	$R2=3.7 \times L1 + 4.7$
		$R3=3.7 \times L + 4$
1000	$R1=4.15 \times L + 18.5$	$R1=4.15 \times L2 + 12.5$
	$R2=4.15 \times L + 11.5$	$R2=4.15 \times L1 + 4.9$
		$R3=4.15 \times L + 4.5$

Note: 1.L, L1, L2 is in meter

Notes:

- Definitions:
  - Mark \*1: Supports need to be in true level
  - Mark \*2: If there is pit, pit need to be water proof and smooth
  - Mark \*3: If dimension E can't be guaranteed, a guard acc.EN115 must be provided as shown (by others)
  - Mark \*4: only for outdoor installation.
- According to EN115, the entrance of both landing must have enough area to facilitate the traffic flow
- Dimension with mark \* should be extended 500mm in case 600mm step or double drive or in case VVVF.
- Intermediate support is reinforced in case of horizontal over 15m please contact us.
- All dimension refer to finished dimension is in mm

# FEH-10 Layout for Public Service Escalator



Type	a	Upper radius	AA	BB	CC	DD	EE	FF	JJ	MM	KK
FEH302	30°	1500	2231	2598	Hx1.732	2370	2815	4530	870	1060	8000
FEH303	30°	1500	2631	2998	Hx1.732	2770	3215	4930	870	1060	8400
FEH304	30°	1500	3031	3398	Hx1.732	3170	3615	5330	870	1060	8800
FEH352	35°	1500	2266	2682	Hx1.428	2505	2780	4420	850	1080	7200
FEH353	35°	1500	2666	3082	Hx1.428	2905	3180	4820	850	1080	7600
FEH303	30°	2700	2863	3283	Hx1.732	3000	3500	5160	870	1060	8800
FEH304	30°	2700	3263	3683	Hx1.732	3400	3900	5560	870	1060	9200

For inclined balustrade For slim-vertical balustrade

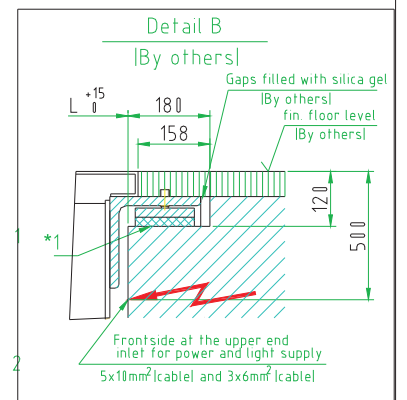
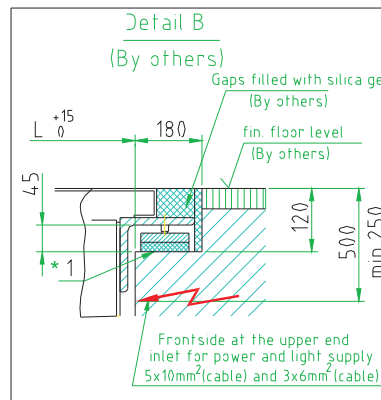
A	600	800	1000	A	600	800	1000
B	910	1110	1310	B	837	1037	1273
C	1195	1395	1595	C	1195	1395	1595
D	1270	1470	1670	D	1270	1470	1670
E	1910	2110	2310	E	1910	2110	2310

A	Reaction Force (KN)	
	W/o intermediate support	With one intermediate support
600	$R1=4.05 \times L + 16.3$	$R1=4.05 \times L2 + 14$
	$R2=4.05 \times L + 8.5$	$R2=4.05 \times L1 + 7$
		$R3=4.2 \times L + 10$
800	$R1=4.45 \times L + 17$	$R1=4.45 \times L2 + 16$
	$R2=4.45 \times L + 9.5$	$R2=4.45 \times L1 + 7.5$
		$R3=4.7 \times L + 11$
1000	$R1=4.95 \times L + 19.5$	$R1=4.95 \times L2 + 17.2$
	$R2=4.95 \times L + 10.5$	$R2=4.95 \times L1 + 8.3$
		$R3=5.2 \times L + 11.3$

Note: 1.L, L1 and L2 is in meter  
2.L1 and L2 do not exceed 15m.

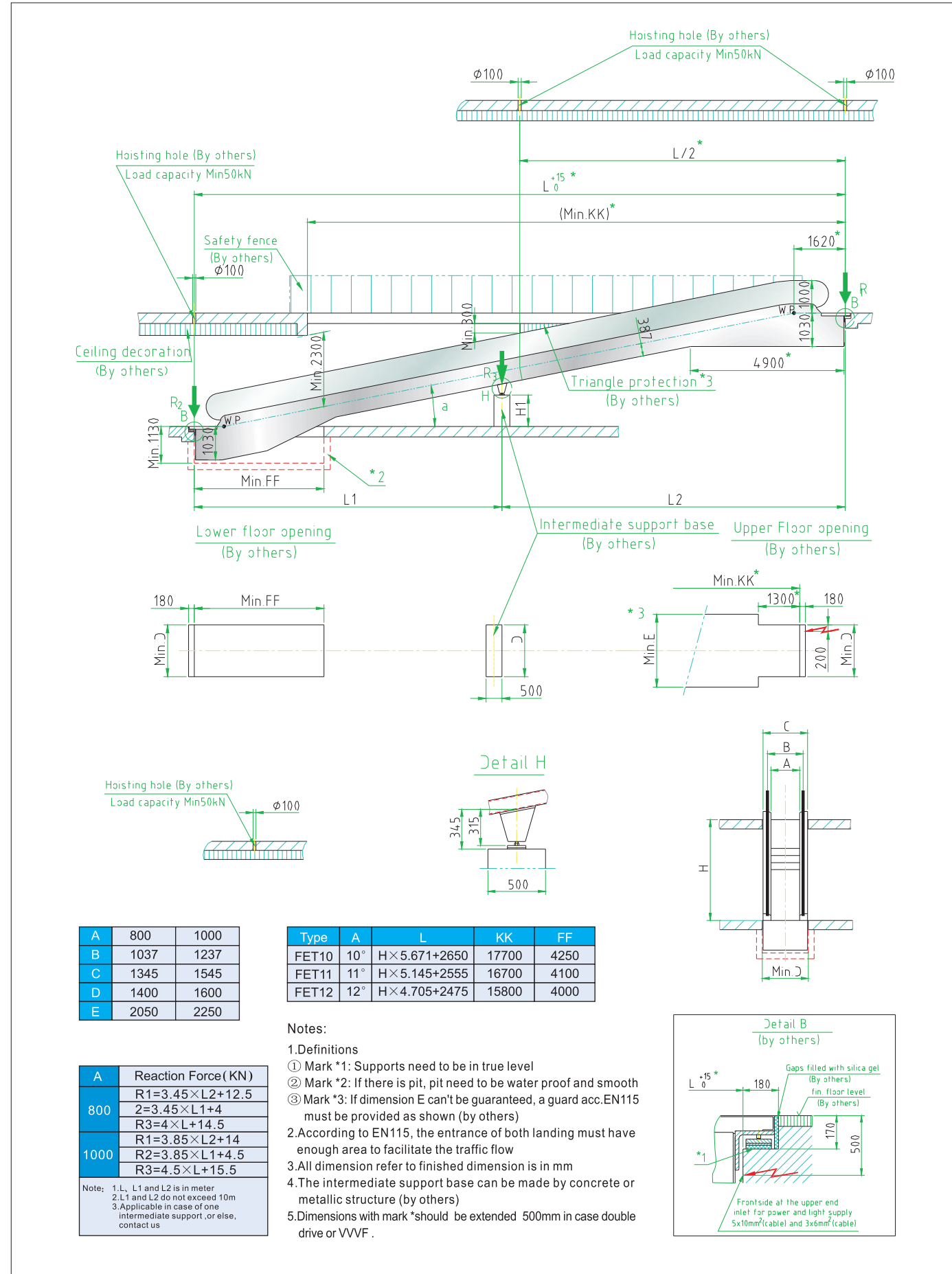
Notes:  
Mark:

- Mark \*1: Supports need to be in true level
- Mark \*2: If there is pit, pit need to be water proof and smooth
- Mark \*3: If dimension E can't be guaranteed, a guard acc.EN115 must be provided as shown (by others)  
According to EN115, the entrance of both landing must have enough area to facilitate the traffic flow
- All dimension refer to finished dimension is in mm
- The intermediate support base can be made by concrete or metallic structure (by others)



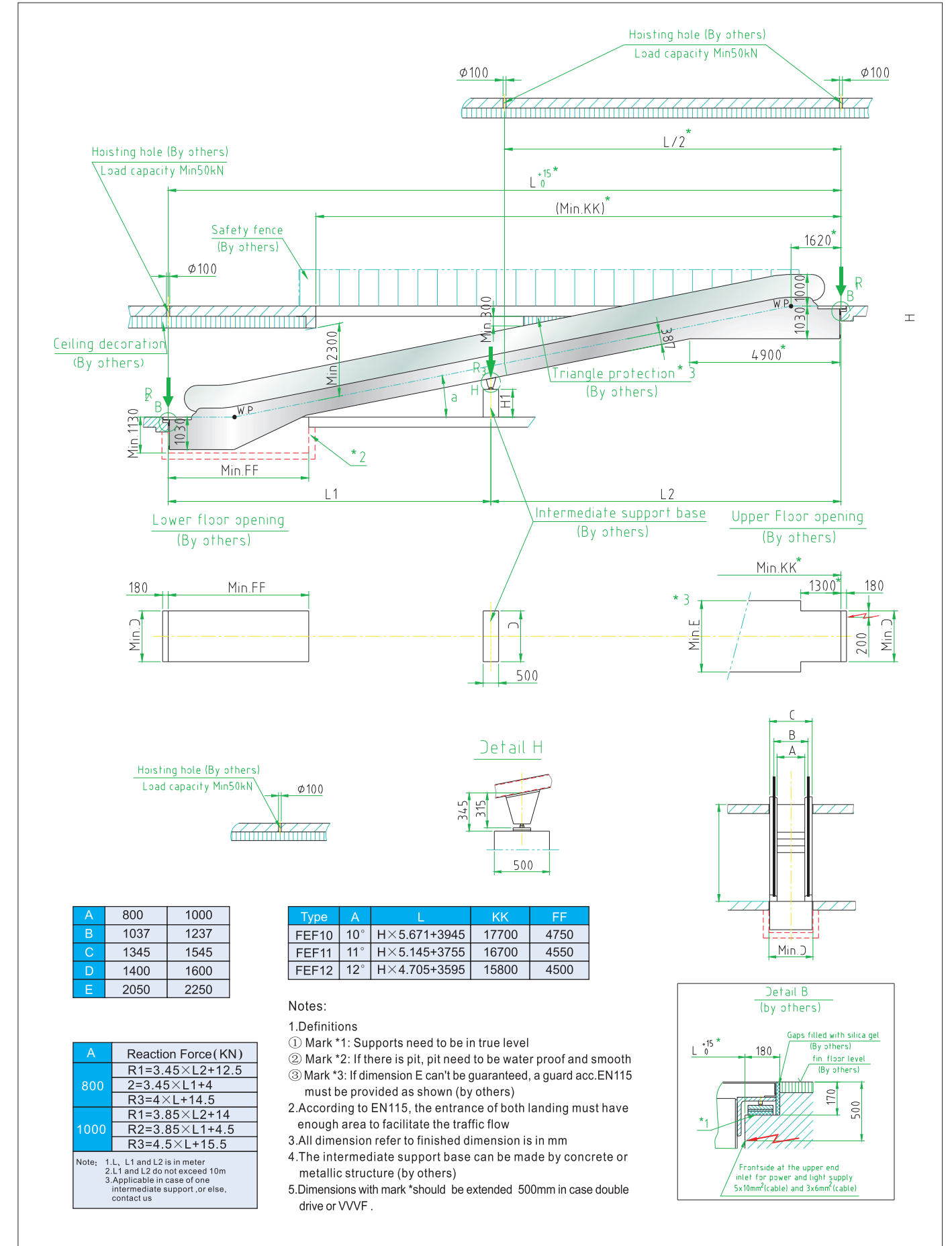


# FET Layout for Passenger Conveyor



We reserve the right to alter some of specifications and descriptions given herein without prior notice

# FEF Layout for Passenger Conveyor

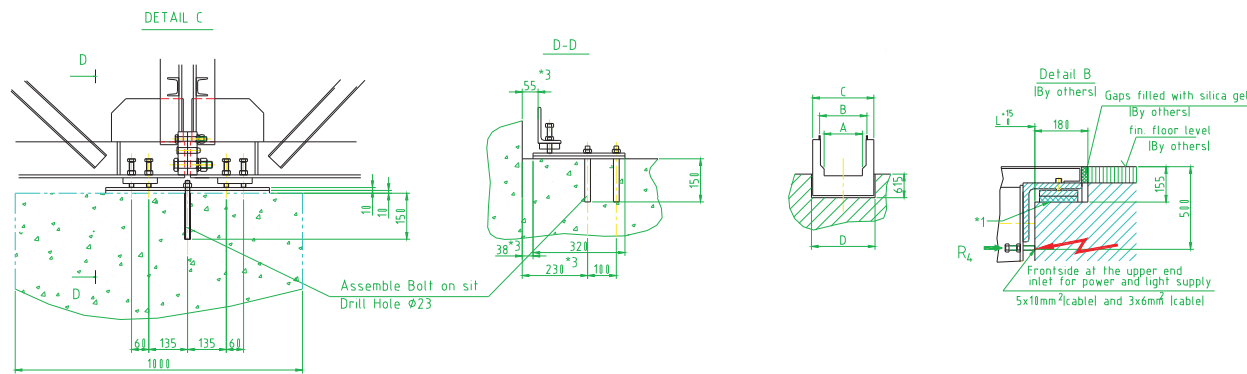
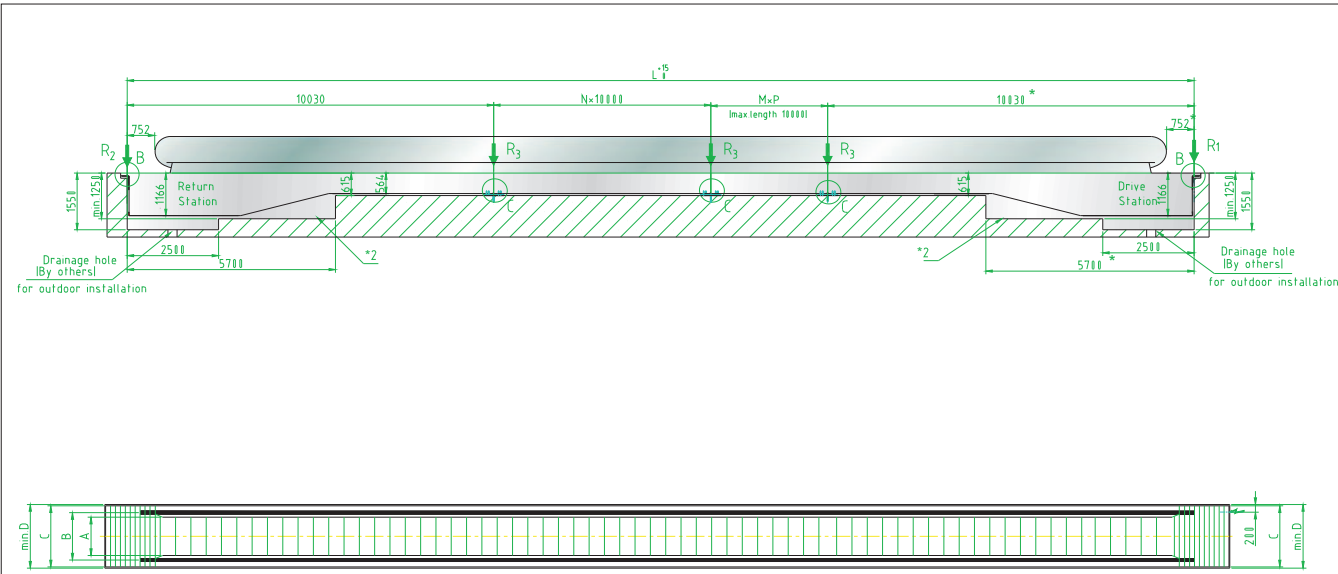


We reserve the right to alter some of specifications and descriptions given herein without prior notice



# FEW layout for Passenger Conveyor

# Project Highlight



## Inclined balustrade

A	1000	1200	1400
B	1310	1510	1710
C	1595	1795	1995
D	1670	1870	2070

## Vertical balustrade

A	1000	1200	1400
B	1237	1437	1637
C	1595	1795	1995
D	1670	1870	2070

A	1000	1200	1400
Reaction Force (KN)			
R1	55	64	73
R2	53	61	69
R3	90	110	125
R4	5	5	5

### Note:

#### 1. Mark:

- ① Mark\*1: Supports need to be in true level
- ② Mark\*2: If there is pit, pit need to be water proof and smooth
- ③ Mark\*3: If dimension D is changed, the dimension marked should be adjusted

2. According to EN115, the entrance of both landing must have enough area to facilitate the traffic flow
3. Dimensions with mark\* should be extended 500mm in case VVVF or double drive
4. All dimension refer to finished dimension is in mm

